

# Indigenous housing and governance: Lessons from case studies of remote communities in WA and NT

AHURI Project # 80124

## Preliminary Research Findings

**Andrea Jardine-Orr  
Frederick Spring  
Martin Anda  
With Roz Walker,**

Curtin Indigenous Research Centre

**Remote Area Developments Group**  
Murdoch University, Western Australia



**Remote Area Developments Group**  
Murdoch University • Western Australia

**AHURi**

# Research Questions

- Research Agenda: “Indigenous Housing: The Housing System”
  - Research Question 1: Program Integration
    - How can human service program integration in relation to housing assistance be improved to achieve a whole of government approach?
  - Research Question 2: Community perceptions of programs & opportunities for community control
    - What are the perceived and actual differences in the nature of community control, ownership and management of housing and how these contribute to asset management in remote indigenous communities?



**Remote Area Developments Group**  
Murdoch University • Western Australia

The logo for AHURI (Australian Housing and Urban Research Institute) features a stylized arch above the text "AHURI".

# Presentation

- Levels of Research
- Method
- Preliminary Research Findings



**Remote Area Developments Group**  
Murdoch University • Western Australia

**AHURi**

# Levels of Research

- Service Providers – State/ Territory
  - AHIC (WA) / IHANT (NT)
  - ATSIC
- Service Providers – Regional
  - Regional Councils
  - Mamabulanjin A. C.
  - Tangentyere A. C.
- Communities
  - Lombadina
  - Djarindjin
  - Papunya
  - Laramba



Remote Area Developments Group  
Murdoch University • Western Australia

**AHURi**

# Method 1

- Literature Review (ongoing during project)
  - review of current and proposed housing policy and programs in WA and NT;
- User Group/Steering Committee
  - ATSIC
  - FaCS
  - WA: DHW (AHID); DIA; DPC; DIA
  - NT: DCDSCA; IHANT



Remote Area Developments Group  
Murdoch University • Western Australia

The logo for AHURi, featuring a stylized arch above the text "AHURi".

# Method 2

## Fieldwork

- community and regional perspectives on the current and proposed policy and programs
- ethical agreement
- Social Assessment
- Institutional Maps

## Evaluation (in progress)



Remote Area Developments Group  
Murdoch University • Western Australia

AHURi

# Method - Social Assessment

- Inductive
- Issues orientated
- Iterative Process
  - secondary data
  - Identify key issues
  - semi-structured interviews and focus groups
  - Analysis
- Additional tool – Institutional Mapping



Remote Area Developments Group  
Murdoch University • Western Australia

**AHURi**

# Method - Institutional Maps

- Program integration - institutionally very complex
- Developed tool of Institutional Maps
  - Organisational charts
  - ‘Flow’ Charts – funding/information
  - Workshopped at different levels



Remote Area Developments Group  
Murdoch University • Western Australia

The logo for AHURI (Australian Housing and Urban Research Institute) features a stylized arch above the text "AHURi".

# Examples of Institutional Maps

## Commonwealth Programs

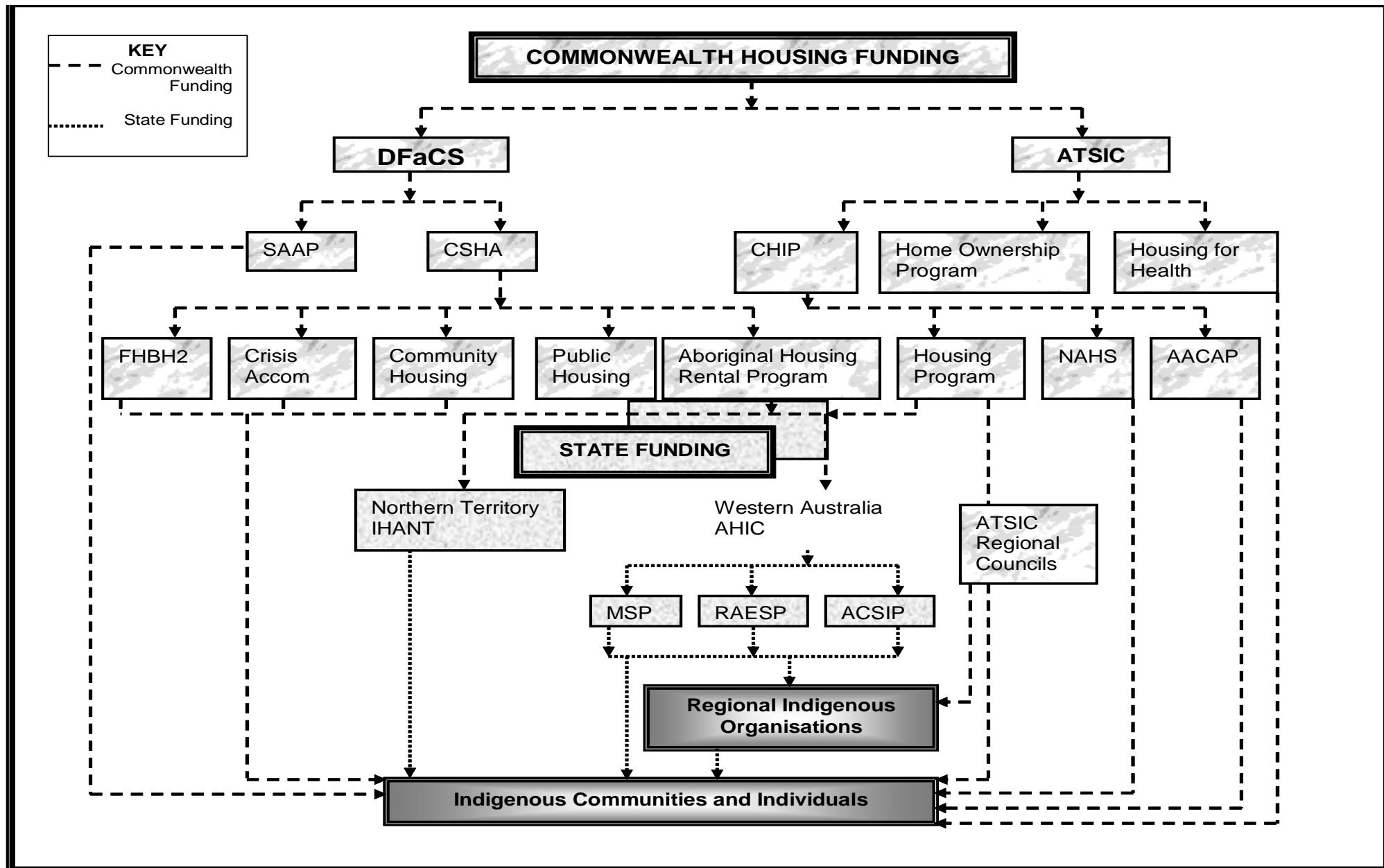
### Western Australia

1. 2002 State and Commonwealth Flow of Funds
2. 2003 Regional Organisational Diagram
3. Regional Funding Flow Diagram
4. Community Organisational Diagram



Remote Area Developments Group  
Murdoch University • Western Australia

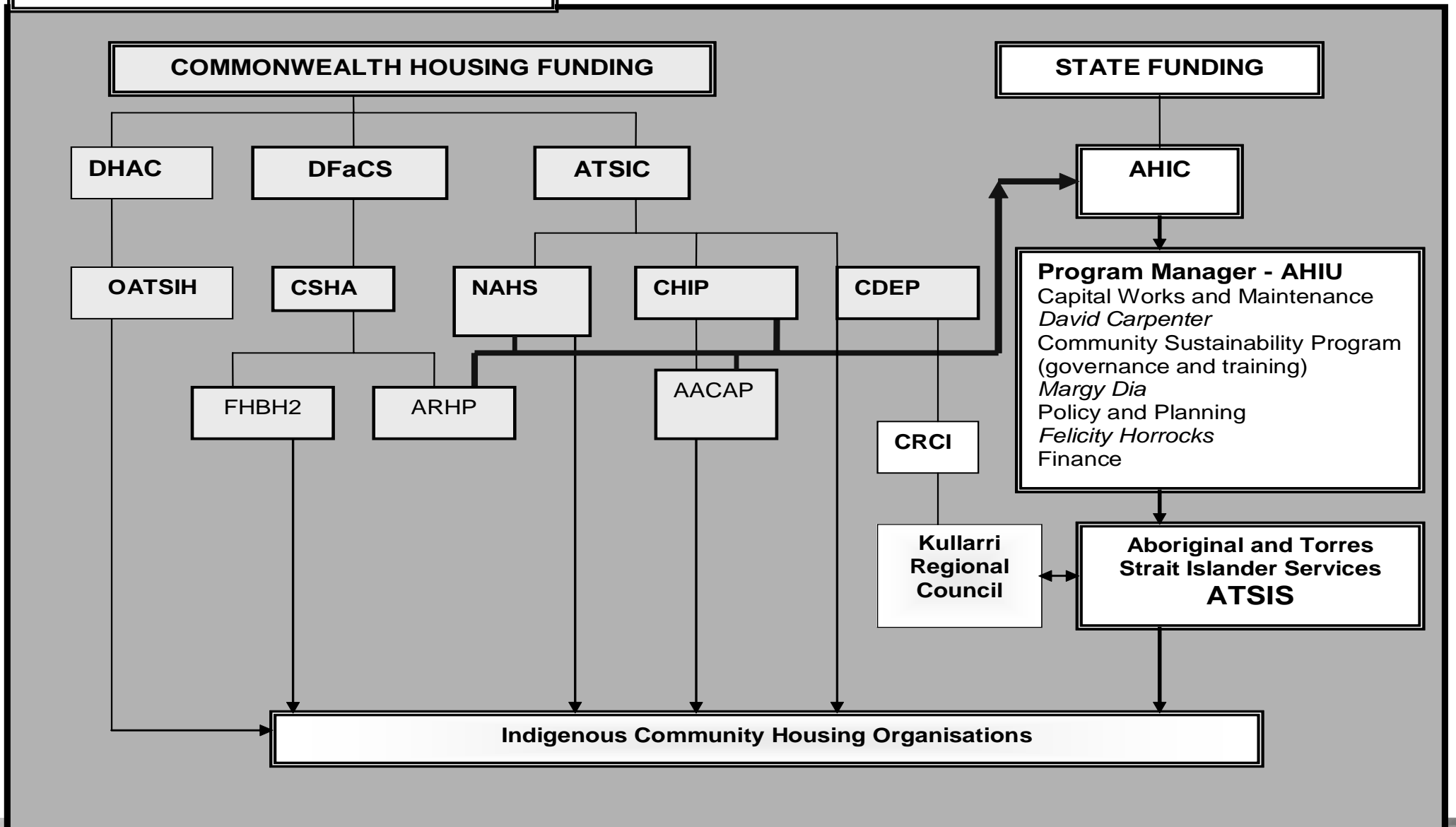
The logo for AHURI (Australian Housing and Urban Research Institute) features a stylized arch above the text "AHURI".



**Remote Area Developments Group**  
 Murdoch University • Western Australia



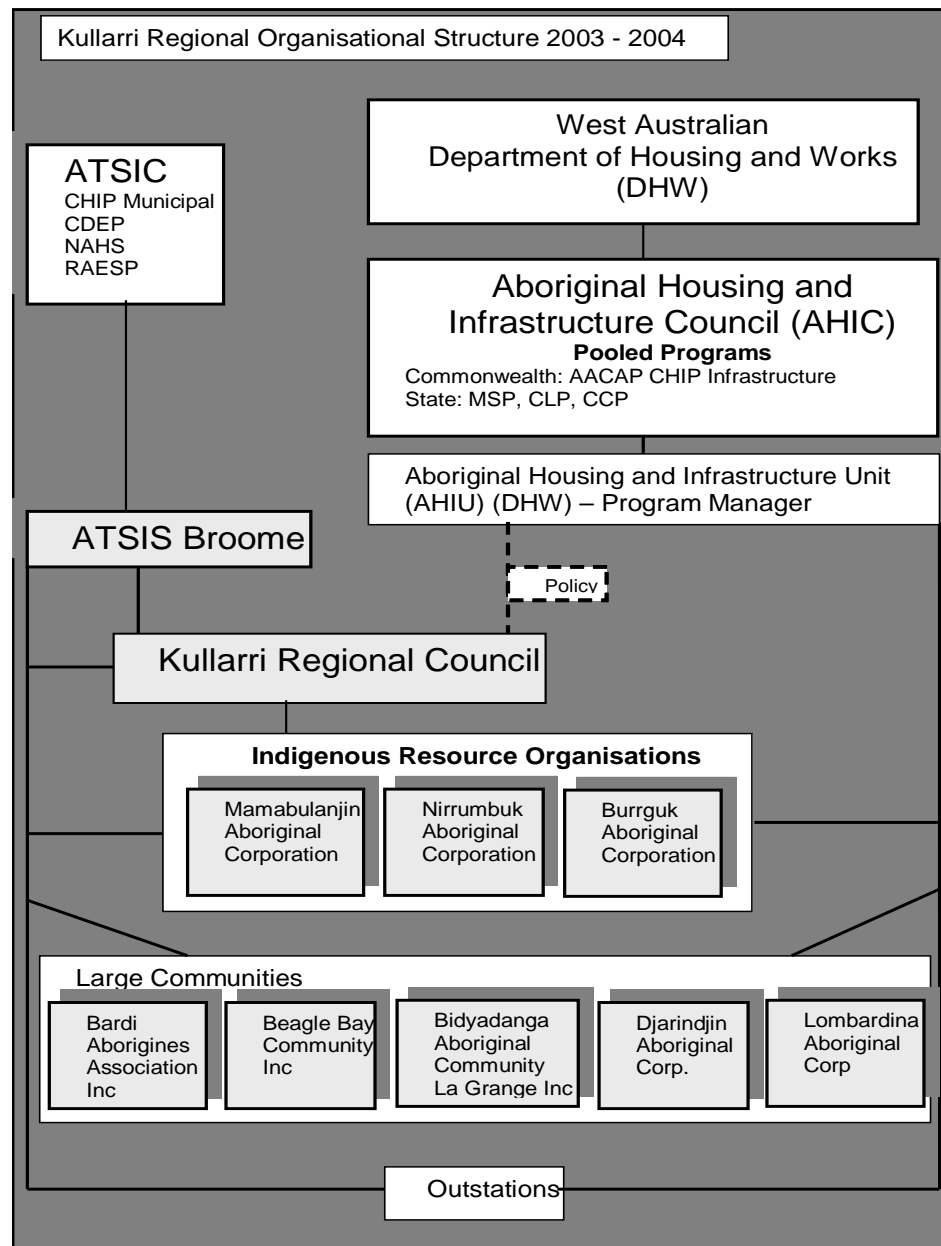
**Commonwealth and State Flow of Funds**



**Remote Area Developments Group**  
Murdoch University • Western Australia



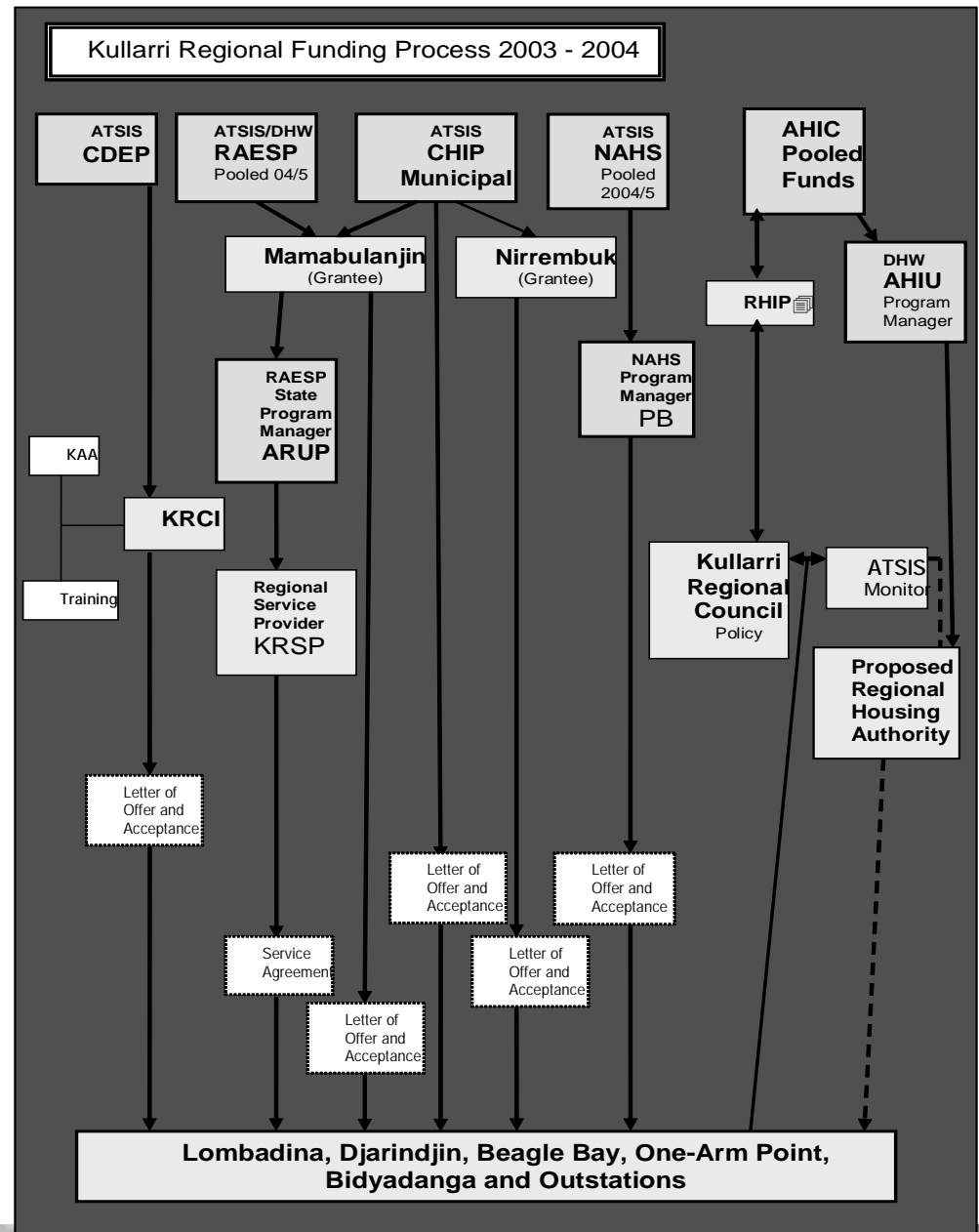
# Regional Organisational Diagram



Remote Area Developments Group  
Murdoch University • Western Australia



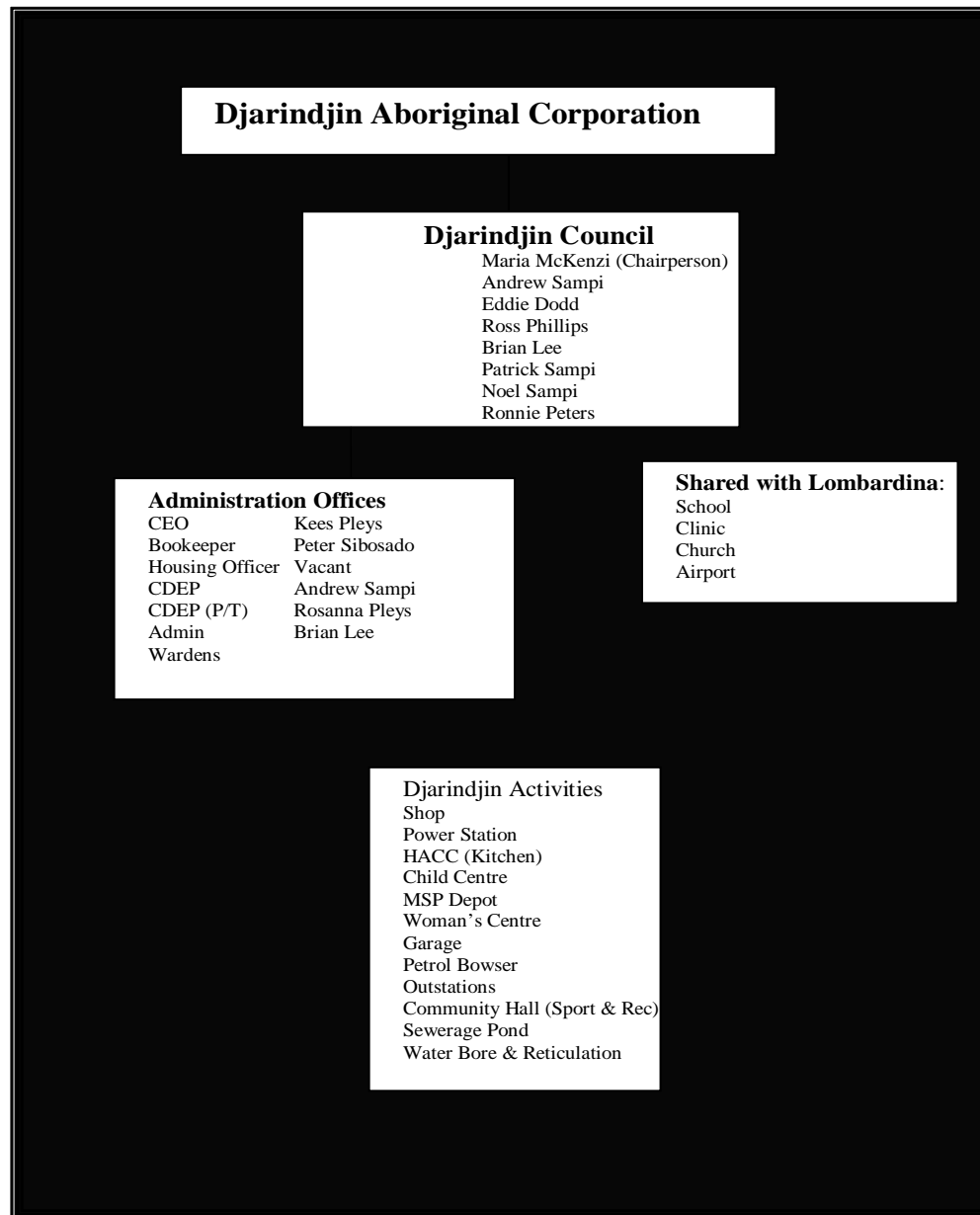
# Regional Funding Flow Diagram



Remote Area Developments Group  
Murdoch University • Western Australia



# Community Organisational Diagram



**Remote Area Developments Group**  
 Murdoch University • Western Australia



# Preliminary Research Findings

## Key Issues

- Program Integration
- Housing Management
- Capacity-Building/Empowerment

= Research Findings & Policy  
Implications



**Remote Area Developments Group**  
Murdoch University • Western Australia

The logo for AHURi, featuring a stylized arch above the text "AHURi".

# Preliminary Research Findings

## Issues

- **Program Integration**
- Housing Management
- Capacity-Building/Empowerment

= Research Findings & Policy Implications



**Remote Area Developments Group**  
Murdoch University • Western Australia

The logo for AHURi, featuring a stylized arch above the text "AHURi".

# Program Integration

- Complex System – inhibits the development of holistic approaches
- NT & WA Bilaterals improved integration but still complex
- *Flexible, community-level program integration*
- *Greater involvement of communities*



Remote Area Developments Group  
Murdoch University • Western Australia

The logo for AHURi, featuring a stylized arch above the text "AHURi".

# Preliminary Research Findings

## Issues

- Program Integration
- Housing Management
- Capacity-Building/Empowerment

= Research Findings & Policy  
Implications



**Remote Area Developments Group**  
Murdoch University • Western Australia

The logo for AHURi, featuring a stylized arch above the text "AHURi".

# Housing Management 1

- **Housing R&M and management an issue**
  - *Greater focus on community*
  - *Repair and maintenance monitoring system*
  - *Develop local skills for R&M*
- **Program/Project management ‘at a distance’ a common issue**
  - *Local or regional management favoured*



Remote Area Developments Group  
Murdoch University • Western Australia

The logo for AHURi, featuring a stylized arch above the text 'AHURi'.

# Housing Management 2

- **Community not viewed as Client/Customer**
  - **Lack of community consultation**
- *Partnerships between Communities, Government Agencies and Managers*
- *Community focus*



Remote Area Developments Group  
Murdoch University • Western Australia

The logo for AHURi, featuring a stylized arch above the text "AHURi".

# Preliminary Research Findings

## Issues

- Program Integration
- Housing Management
- Capacity-Building/Empowerment

= Research Findings & Policy  
Implications



Remote Area Developments Group  
Murdoch University • Western Australia

The logo for AHURi, featuring a stylized arch above the text "AHURi".

# Capacity-Building/Empowerment

- **Lack of a ‘community development’ or empowerment approach, particularly ‘on the ground’**
  - *Promote community development as a long-term approach to asset management*
- **Few economic opportunities in remote areas – housing one opportunity**
  - *Use existing skills*
  - *Program to develop relevant skills*



Remote Area Developments Group  
Murdoch University • Western Australia

The logo for AHURi, featuring a stylized arch above the text "AHURi".

# Key Findings Conclusion

- Local focus – work *with* not *for* communities
  - Community participation/ empowerment
  - Local/Regional program & project management
  - Utilise relevant existing skills
  - Develop local repair and maintenance skills
  - Enhance employment opportunities in remote communities e.g. preferential tenders



Remote Area Developments Group  
Murdoch University • Western Australia

The logo for AHURi, featuring a stylized arch above the text "AHURi".